

Anchor-Loc and Prismo Modules

Anchor-Loc and Prismo modules are prefabricated modular units comprising of a single roll of needled Fiberfrax Durablanket, folded to a specified thickness and compression. Due to the unique patented stainless steel fixing system, Anchor-Loc and Prismo module installation is simple, fast and efficient, with a high degree of integrity. The insulation properties of Anchor-Loc and Prismo modules provide for an extremely efficient insulating lining with low conductivity, low heat storage capacity and complete resistance to thermal shock damage.

General Characteristics

Anchor-Loc and Prismo external anchoring:

- Fast, simple installation with no risk of error
- 3 point fixing system guarantees a high degree of mechanical strength
- Pre-welded studs allow weld integrity inspection and ensures constant lining density

Polythene packaging:

- Keeps module compressed
- Protects modules in transit
- Minimises clean-up
- Safer and more hygienic to install

Folded blanket design:

- Resists erosion caused by high gas velocities due to its continuous fiber construction
- Withstands mechanical damage due to its high compression
- Allows coating to be applied, protects against slag and chemical attack
- Operate with most types of fuels
- Custom design special shapes can be made



Anchor-Loc Modules

Module with central fastener suitable for small furnaces and finishing rows in lining made from Prismo modules.

Prismo Modules

These modules characterised by its three point fastening system, and are recommended for lining any type of combustion chamber. They provide rapid installation and are built to last.

Stud Anchoring Options

Anchor-Loc modules, with the central fixing system, can be fastened using the following options:

A. Weld-Loc[®] Attachment System

A special weld cartridge is installed into the Anchor-Loc module. This cartridge serves a dual function, welding the stud through the module to the casing plate, and torquing the threaded stud to draw the module to the casing plate. Weld-Loc modules offer the following advantages:

- High installation speed
- Ease and simplicity of installation
- Multiple welds per module are possible
- Permits random placement of modules on the casing
- System provides positive torque test on the welds.

Thread Loc₂ Attachment System

Standard pre-welded threaded studs used to anchor both Anchor-Loc and Prismo modules.

- Access to the pre-welded stud allows for full testing and inspection prior to module installation
- Compatibility with mastic coatings, backup insulation and foil barrier

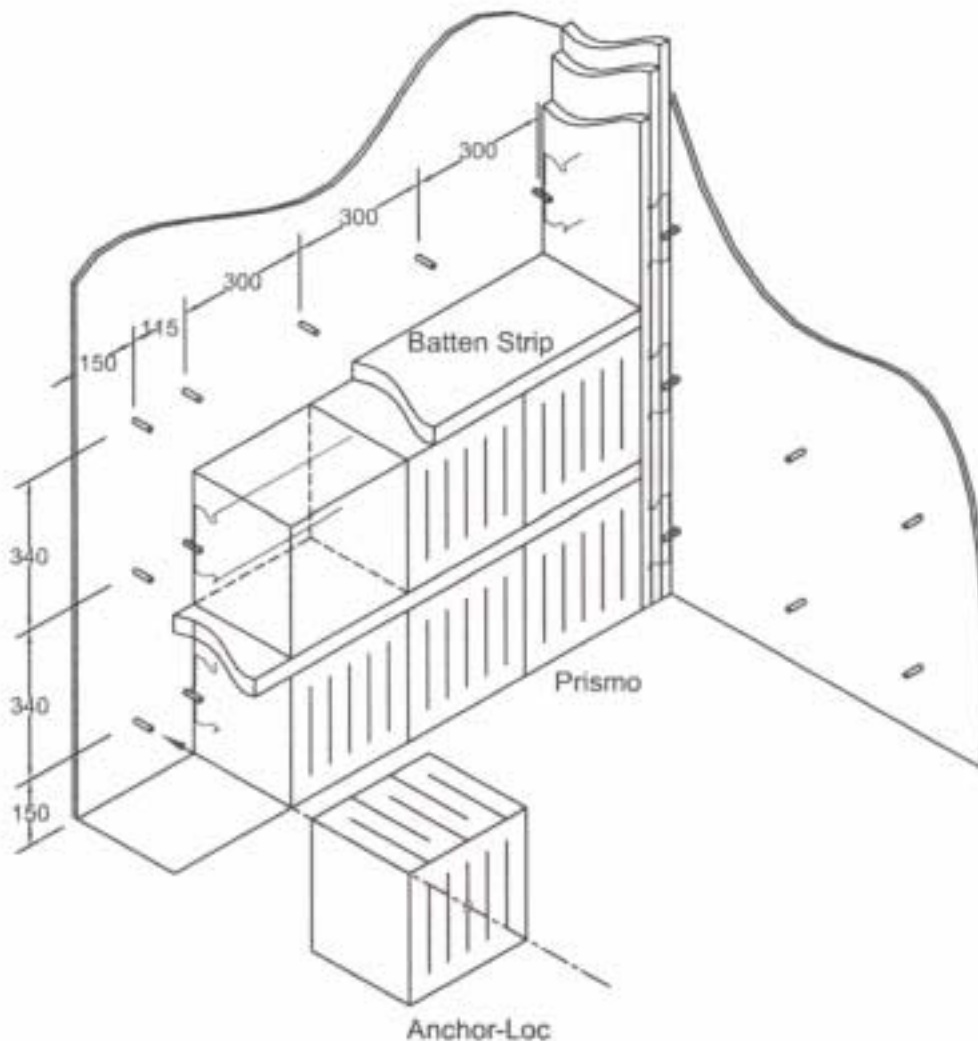
Installation Design

To ensure an efficient and high quality finish to the module lining, Unifrax Australia can provide installation drawings and solutions to suit individual customer requirements.

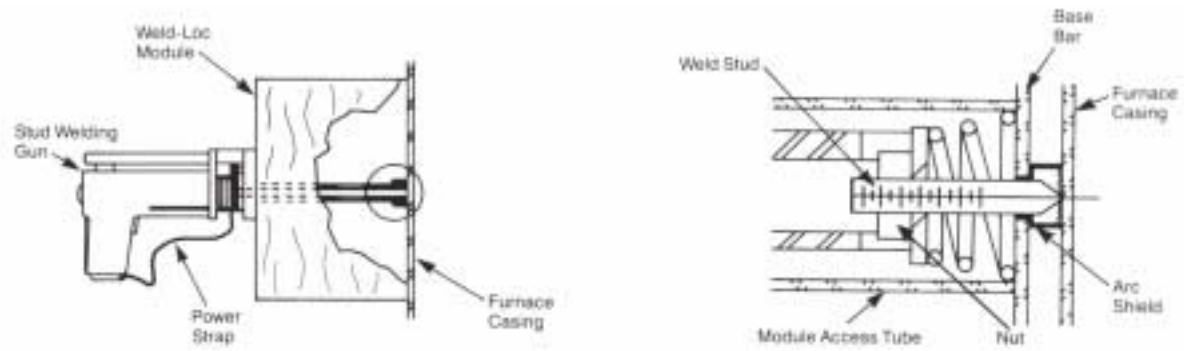
Power-Loc[®]₂ Attachment System

A hardened steel pin mechanically secures each Power-Loc module to the steel casing. The anchor pin is installed with a special Hilti[®] powder actuated fastening tool and power booster. Advantages offered by the Power-Loc module are:

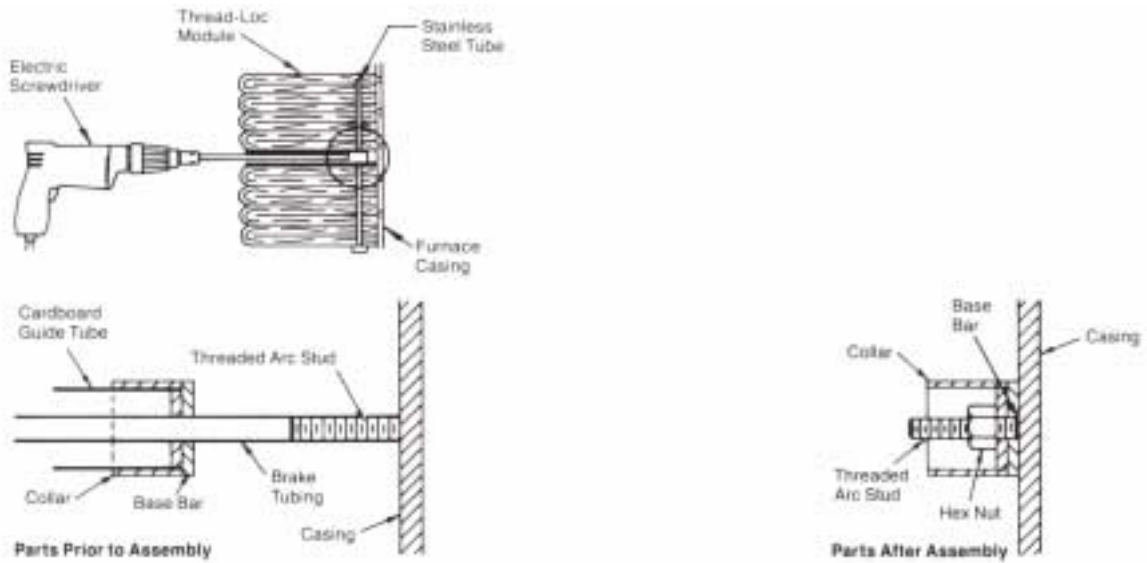
- High installation speed
- Casing preparation is eliminated
- Permits random placement of modules on casing
- Ease and simplicity of use
- No special welding equipment is required



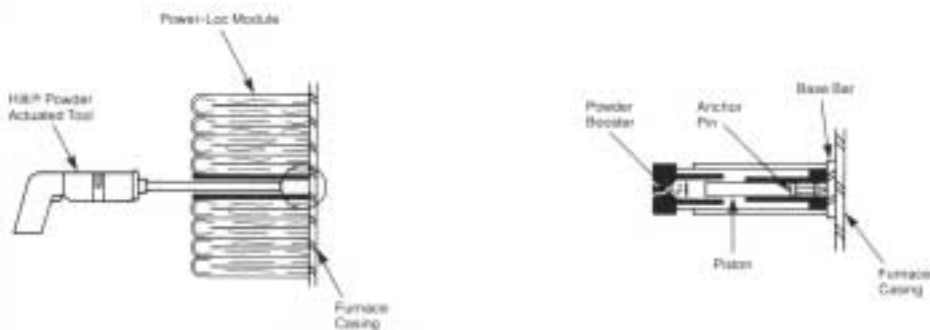
A. Weld-Loc[®]₂ Attachment System



B. Thread Loc₂ Attachment System



c. Power-Loc[®]₂ Attachment System



Thermal Performance

Hot Face	Insulation Thickness mm (Cold Face Temperature °C)				
Temperature	100	125	150	175	200
900°C	93	82	75	69	65
1000°C	105	93	84	78	72
1100°C	119	105	95	87	81
1200°C	134	117	106	97	90
1300°C	149	131	118	108	100

Typical Applications

- Industrial furnace linings (roofs, walls and doors)
- Thermal insulation of ladle and turndish preheat covers
- Thermal insulation of incineration equipment
- Refinery and Petro-chem furnace heaters and flue linings
- Insulation of Co-generation units
- Insulation of small size furnaces (Prismo modules)

Availability

- Standard module is 305 x 305mm
- Thicknesses available from 100mm to 300mm
- Special shapes and sizes available subject to order
- Anchor-Loc and Prismo anchoring supplied in 304 stainless steel (other grade available subject to order)
- Anchor-Loc and Prismo module are available in higher temperature grades.